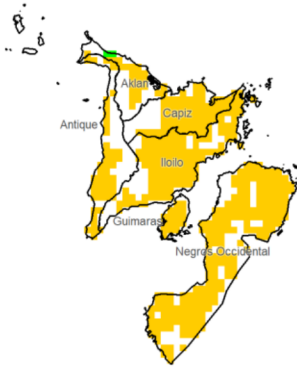
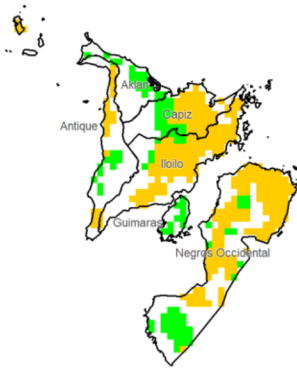


Region VI (Western Visayas)

Water Availability for Rice
Prevailing Stage : (I) Nursery



Water Availability for Corn
Prevailing Stage : (I) Establishment



Provincial Values

	Mon. Ave. Rainfall (mm)	Rice		Corn	
		CS	CCI (%)	CS	CCI (%)
Aklan	200.7	I	35.8	I	74.8
		II	33.0	II	52.1
		III	31.7	III	40.9
		IV	50.1	IV	51.5
Antique	177.8	I	27.9	I	44.7
		II	25.9	II	34.6
		III	25.1	III	28.7
		IV	37.1	IV	34.3
Capiz	127.2	I	18.4	I	41.5
		II	16.7	II	27.6
		III	15.9	III	21.0
		IV	27.0	IV	27.2
Guimaras	154.2	I	26.9	I	58.7
		II	24.5	II	37.2
		III	23.4	III	27.9
		IV	40.6	IV	36.7
Iloilo	109.2	I	17.0	I	35.4
		II	15.2	II	23.1
		III	14.4	III	17.5
		IV	25.4	IV	22.8
Negros Occidental	105.3	I	19.0	I	43.3
		II	17.0	II	27.7
		III	16.0	III	20.3
		IV	30.0	IV	27.3

Crop Stage (CS) highlighted in **bold** is the dominant stage during the month of May

Rice CS: (I) Nursery, (II) Vegetative, (III) Reproductive, (IV) Ripening
 Corn CS: (I) Establishment, (II) Vegetative, (III) Reproductive, (IV) Maturity

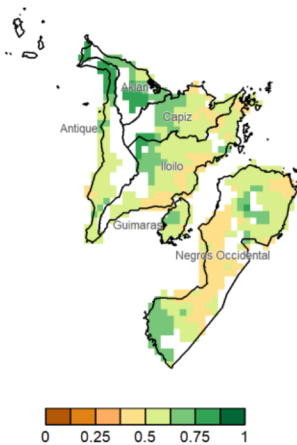
CCI Category: Inadequate (yellow), Sufficient (green), Excess (blue)

Regional Summary

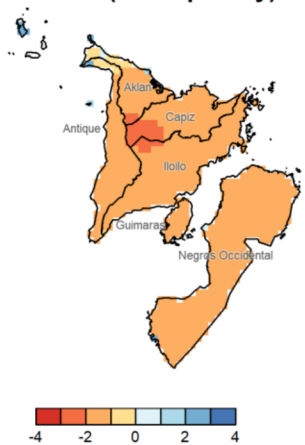
Inadequate water availability plagued nearly all the provinces in the region for both rice and corn crops in all cropping stages. The SPEI3 map illustrates this insufficiency and shows that during the past three months, the whole region has experienced a notable increase in dryness. This drier condition is attributed to El Niño, which limits the monthly rainfall, as seen in the RX1 day. However, during the latter week of the month, a maximum rainfall amount of about 300mm in some areas in Aklan was experienced due to the occurrence of TD AGHON, as seen in the RX5day map.

Furthermore, this persistent dry condition in the region may have resulted in damage to both rice and corn crops. As shown in the NDVI, crops may generally be under moisture stress, while some are still in good condition in Aklan, and in some parts of Capiz and Iloilo.

NDVI



SPEI3 (Mar-Apr-May)



RX1day



RX5day

